

LEGEND

| | | | |
|--|-------------------------------------------------------------------------------------------------------------------------------------------------|--|--|
| | | | |
| | <p>Buoy</p> <ul style="list-style-type: none"> AIS Green CAN AIS Red NUN Green CAN Red NUN | | |

Scale: 0 312.5 625 937.5 1,250 2,500 Feet

NOTES:
 Horizontal Coordinate System:
 World Geodetic System of 1984 (WGS84), projected to the Universal Transverse Mercator (UTM) Zone 15 North.
 Distance units in U.S. Survey Feet
 Vertical Datum:
 Soundings are shown in feet and indicated depths are referenced to water surface at time of collection.
 The information depicted on this map represents the results of a survey conducted on the date indicated and can only be considered to represent the general condition existing at that time.
 The location of navigation aids are based on and provided by the U.S. Coast Guard.

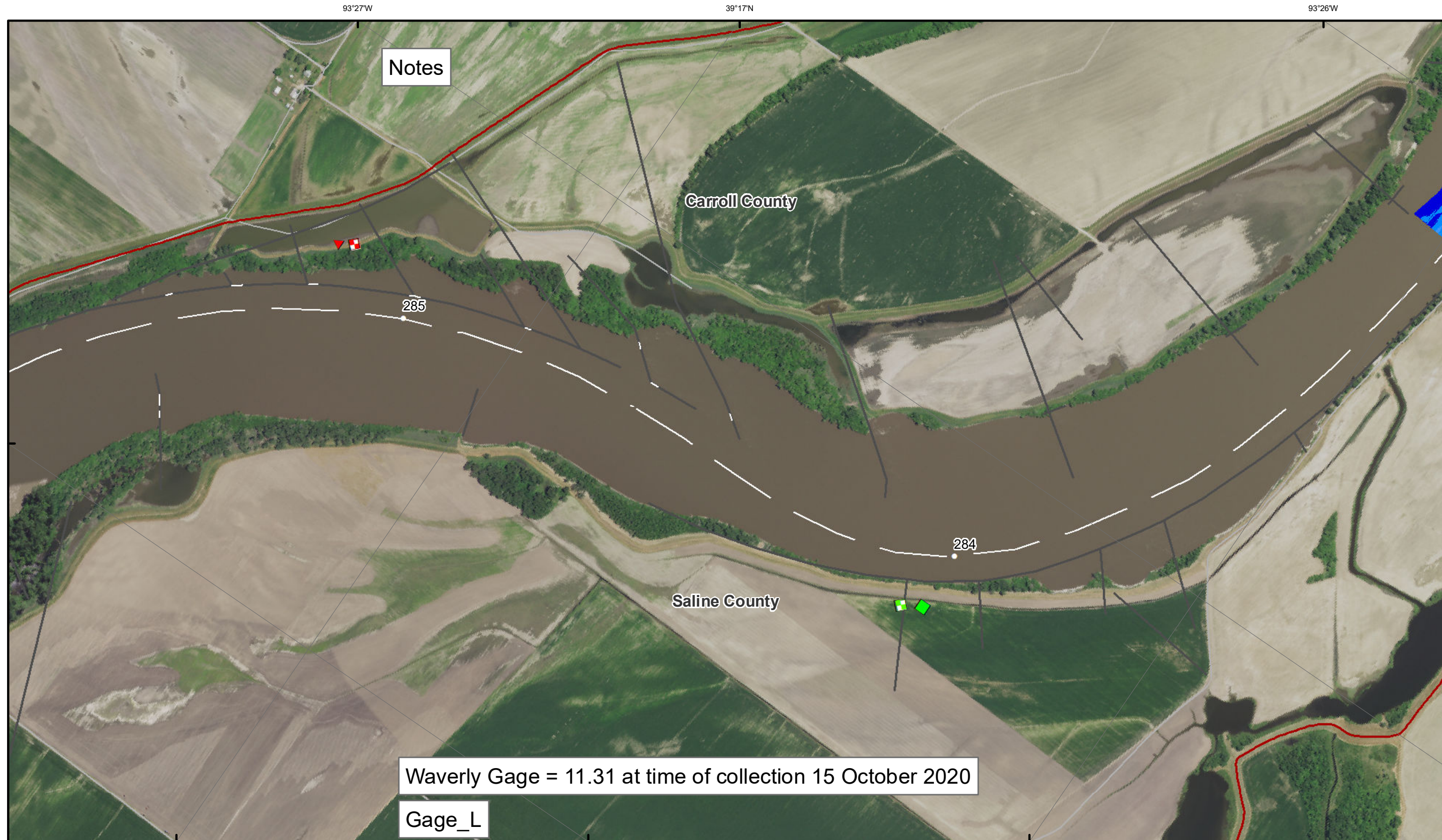


DISCLAIMER: The U.S. Army Corps of Engineers (USACE) provides this information as a service to the public. It is not intended to be used for any purpose other than that for which it was intended. The USACE makes no warranty, express or implied, regarding the accuracy, reliability, or completeness of the information provided. The USACE is not responsible for any errors or omissions in this information. The USACE is not liable for any damages, including consequential damages, arising from the use of this information. The USACE is not responsible for any actions taken based on this information. The USACE is not responsible for any actions taken based on this information.

| | |
|----------------------------------------------------|------|
| KANSAS CITY DISTRICT MISSOURI RIVER AREA OFFICE | |
| Submitted By: | MRAO |
| Reviewed By: | MRAO |
| Checked By: | MRAO |

Survey Information
 MO_03_LMR
 MO_03_LMR_20201015_CS_281_0_283_0_SORT
 15 October 2020

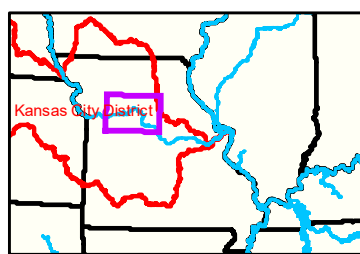
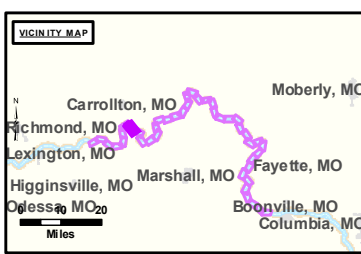
Sheet Number
 34 of 42



Notes

Waverly Gage = 11.31 at time of collection 15 October 2020

Gage_L



LEGEND

| | | | | | | | | | |
|--|----------|--|----------------|--|----------------|--|-----------|--|---------------|
| | < 8 | | < 8 ft | | Green Passing | | Green | | AIS Green CAN |
| | 8 - 9 | | 8 - 9 ft | | Red Passing | | Red | | AIS Red NUN |
| | 9 - 9.5 | | 9 - 10 ft | | Green Crossing | | Green CAN | | Red NUN |
| | 9.5 - 10 | | 10 - 12 ft | | Red Crossing | | Junction | | |
| | 10 - 12 | | River Mile | | | | | | |
| | 12 - 14 | | Sailing Line | | | | | | |
| | 14 - 16 | | BSNP Structure | | | | | | |
| | > 16 | | Levee | | | | | | |

Scale: 0 312.5 625 937.5 1,250 2,500 Feet



NOTES:
 Horizontal Coordinate System:
 World Geodetic System of 1984 (WGS84), projected to the Universal Transverse Mercator (UTM) Zone 15 North.
 Distance units in U.S. Survey Feet

Vertical Datum:
 Soundings are shown in feet and indicated depths are referenced to water surface at time of collection.

The information depicted on this map represents the results of a survey conducted on the date indicated and can only be considered to represent the general condition existing at that time.

The location of navigation aids are based on and provided by the U.S. Coast Guard.



DISCLAIMER: The U.S. Army Corps of Engineers (USACE) provides this information as a service to the public. It is not intended to be used for any purpose other than that for which it was prepared. The USACE makes no warranty, express or implied, regarding the accuracy, reliability, or completeness of the information provided. The user assumes all liability for any use of the information provided. The USACE is not responsible for any damage or loss resulting from the use of this information. The USACE is not liable for any errors or omissions in this information. The USACE is not responsible for any damage or loss resulting from the use of this information. The USACE is not liable for any errors or omissions in this information.

| | |
|----------------------------------------------------|------|
| KANSAS CITY DISTRICT MISSOURI RIVER AREA OFFICE | |
| Submitted by: | MRAO |
| Reviewed by: | MRAO |
| Checked by: | MRAO |

Survey Information
 MO_03_LMR
 MO_03_LMR_20201015_CS_281_0_283_0_SORT
 15 October 2020

Sheet Number
 35 of 42